

## VINTAGE COLLECTION

### AVAILABLE FORMATS

22.5mm Engineered

16mm

3/4" Solid

### SPECIES

Board-Form French Oak

### TEXTURE OPTIONS

Original Face

Planed Face

Core

### EDGE DETAIL

Hand Rolled Edges

### GRADE

Rustic Grade

(Water stains, Undulated texture, Band Saw Markings)

### LENGTHS

Random (2ft up to 14ft)

### WIDTHS AVAILABLE

5" - 11 1/4"

### FINISH

European Oil (Standard)

Signature (Urethane)

### BURCHETTE & BURCHETTE

196 Austin Traphill Rd

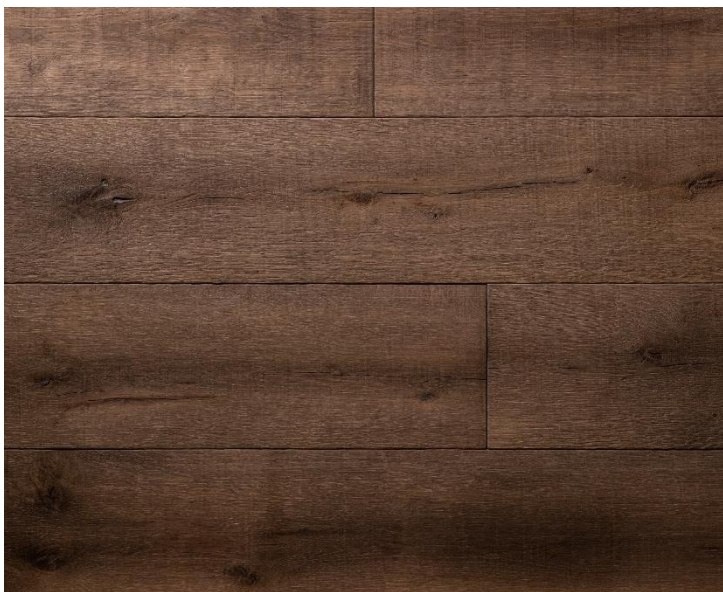
Elkin, NC 28621

Office: 336-469-1491

info@burchetteandburchette.com

# Natural Creations

REAL HARDWOOD FLOORS



## WARMSTONE

Warmstone is an Original Face, salvaged and repurposed Board-Form French Oak. It has an undulated texture, faint saw marks, and a rolled pillowed edge. Signs of previous life, including water satins from the Board-Form process, ensure the material's provenance. Warmstone is treated with a hand-applied reactive stain process and finished with our Signature Finish.

7.5mm Lamella

22.5mm Construction



Tongue and Groove  
End Matched

15mm baltic birch plywood  
(21 mm Engineered)

0- VOC | CARB 2 Compliant

Radiant Heat Approved

Matching Tread Blanks & Square Stock Nosing

Made in USA

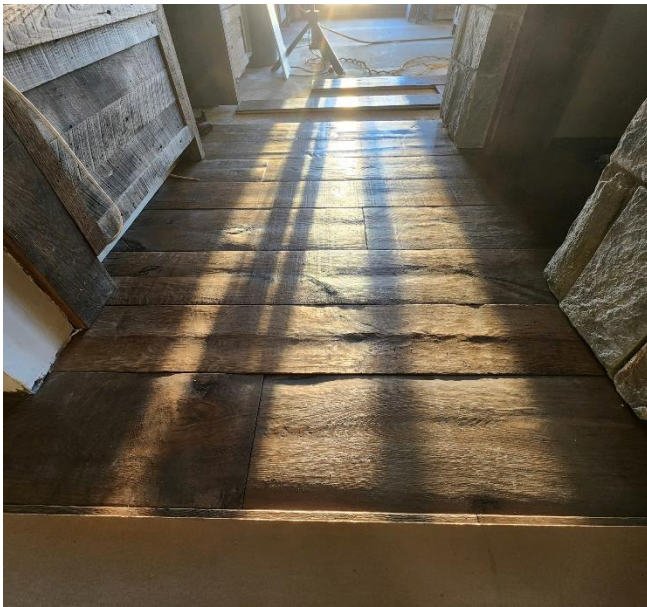


---

### ***WATER STAINS***

---

Original Face Board-Form French Oak will show signs of previous life, including water stains from the Board-Form process.

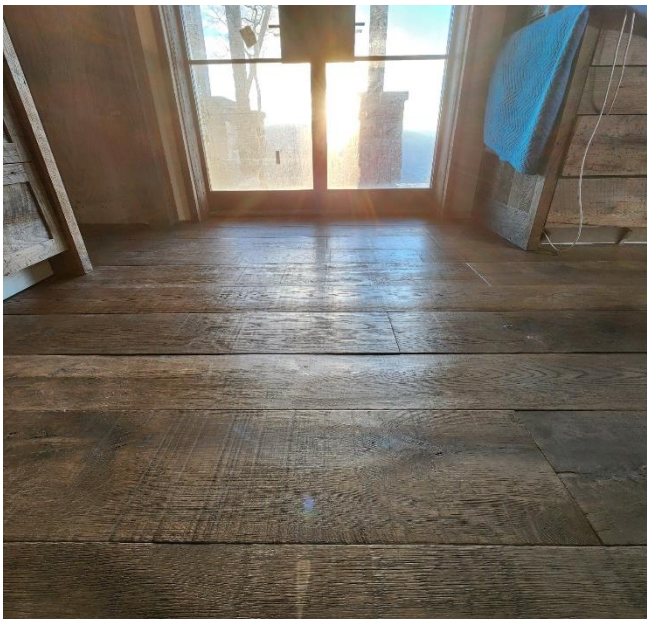


---

### ***HIGH & LOW EDGES***

---

Board-Form French Oak will have an undulated texture and rolled pillowed edges, which ensure the material's provenance.



---

### ***BAND SAW MARKS***

---

The Original Face Texture will illustrate Band Saw markings across the face. If these markings are undesirable, please consider the Planed face texture.